

Attachment 2 - Aerial photograph, Wollongong LEP 2009 zoning map and site photographs

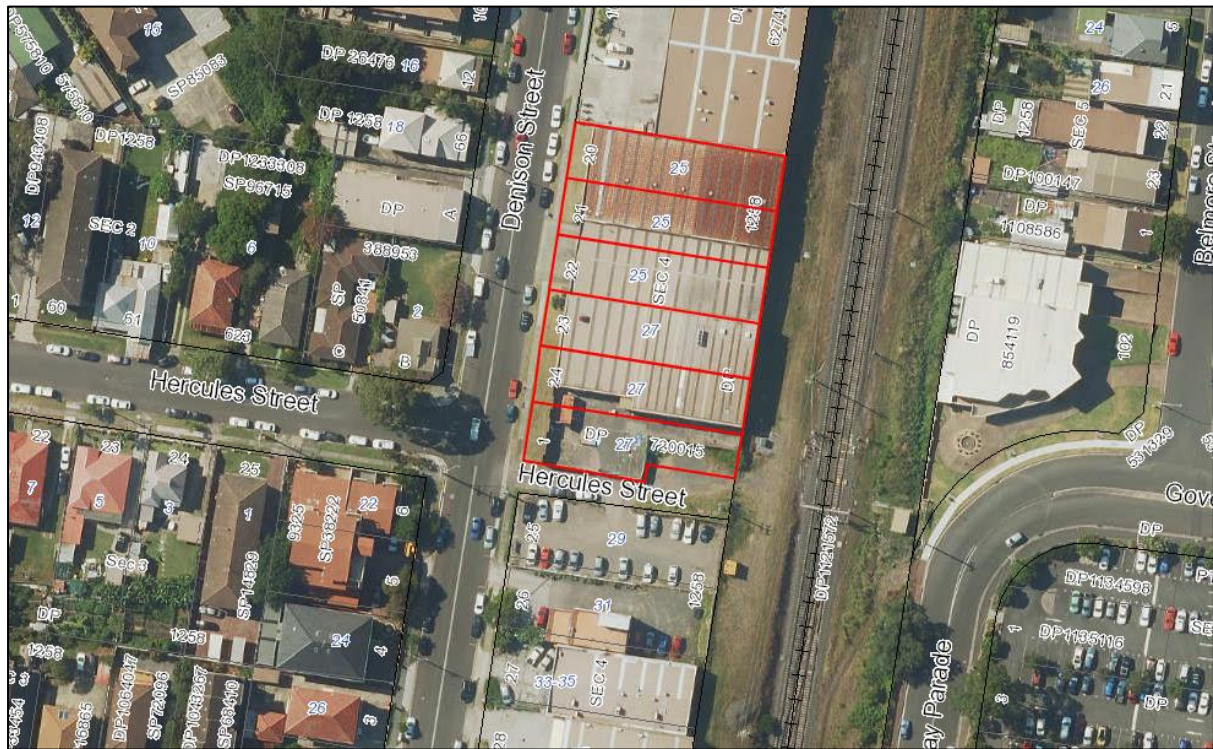


Figure 1 – 2016 Aerial photograph

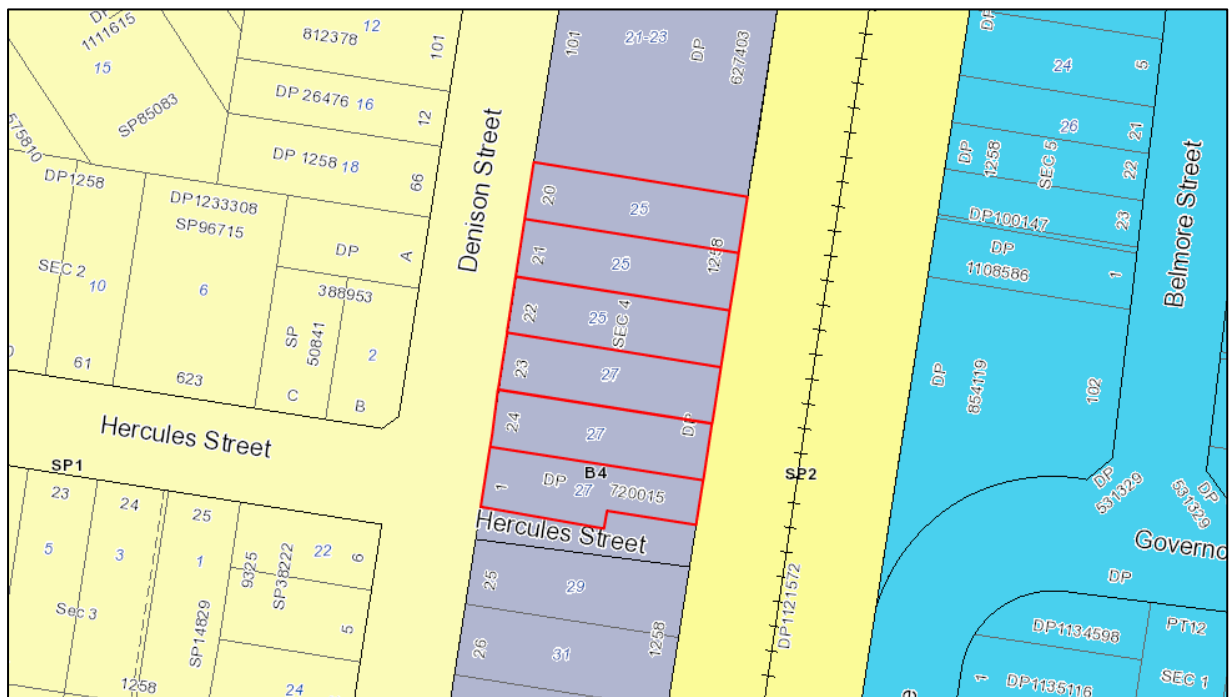


Figure 2 – Zoning Extract Wollongong LEP 2009



Figure 3 – Existing building occupying the site, viewed from the Denison Street frontage looking east (source: SET Consultants Statement of Environmental Effects)



Figure 4 – Existing building occupying the site, viewed from the Denison Street frontage looking north-east (source: SET Consultants Statement of Environmental Effects)



Figure 5 – Unformed Hercules Street located along the southern boundary of the site (looking east) (source: SET Consultants Statement of Environmental Effects)



Figure 6 – Adjoining medical/ medical imaging centre to the immediate north of the site, recently completed renovation (source: SET Consultants Statement of Environmental Effects)